

# The formation and function of



UK Board of  
Healthcare Chaplaincy

## The legacy of CAAB

CAAB was established in 2005 by AHPCC, CHCC and SACH as an advisory board to:

- to promote the theory and knowledge of chaplaincy
- to make recommendations about the academic standards, training and competences of healthcare chaplains
- to operate a scheme for awarding points in recognition of continuing professional education

## Developmental drivers:

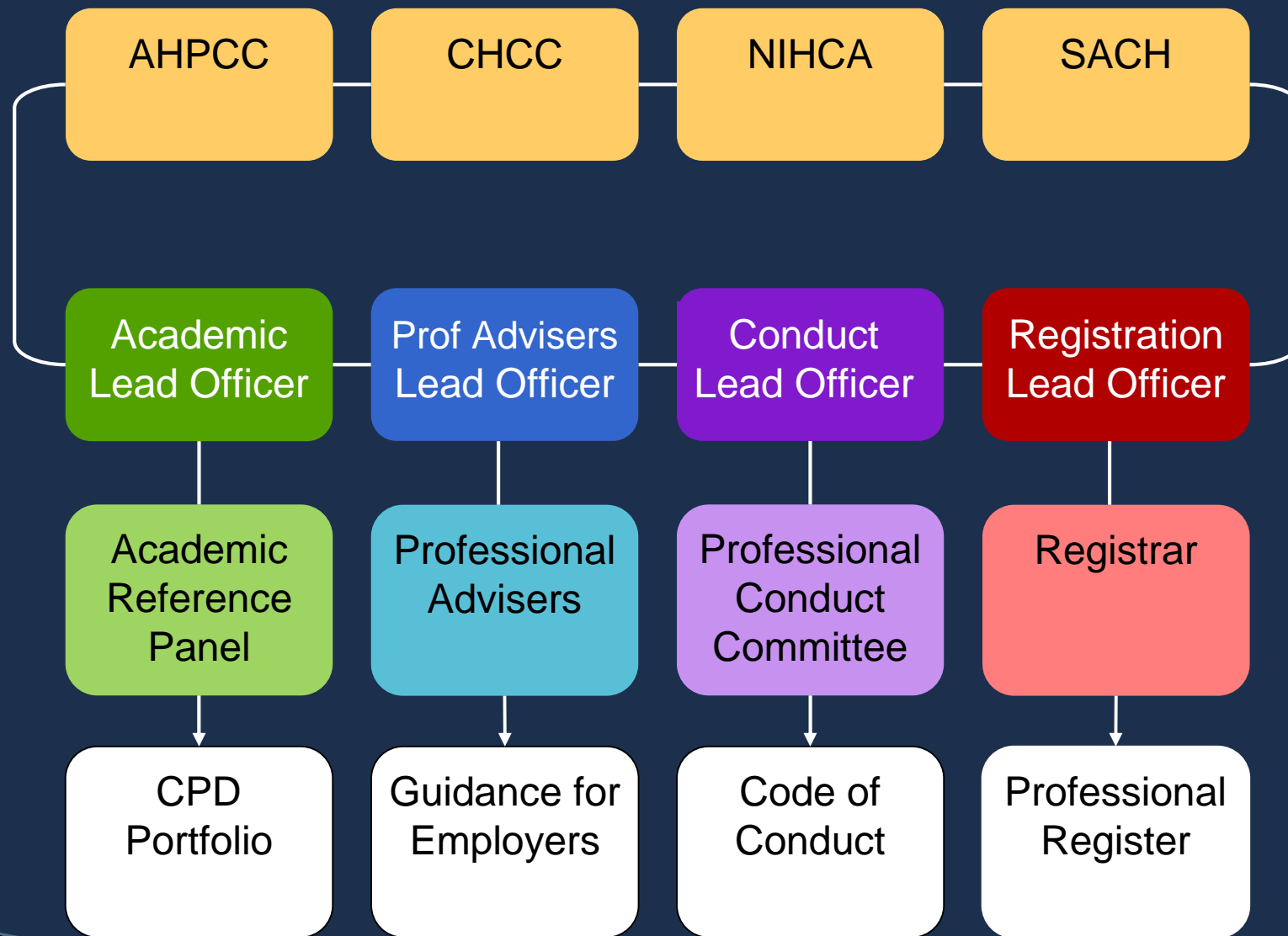
- public experience & expectations
- quality & effectiveness of healthcare services
- employers' expectations
- professional coherence of healthcare chaplaincy across the UK and internationally
- experience of the professional associations of healthcare chaplains
- *Trust, Assurance, Safety*

“In order to assure a safe and high-quality experience for patients across the spectrum of their encounters with health professionals, we need to ensure proportionate arrangements for all the professions involved. There can be no weak links in the chain of care.”

Trust, Assurance & Safety (2007) para. 20

## Functions of the UKBHC

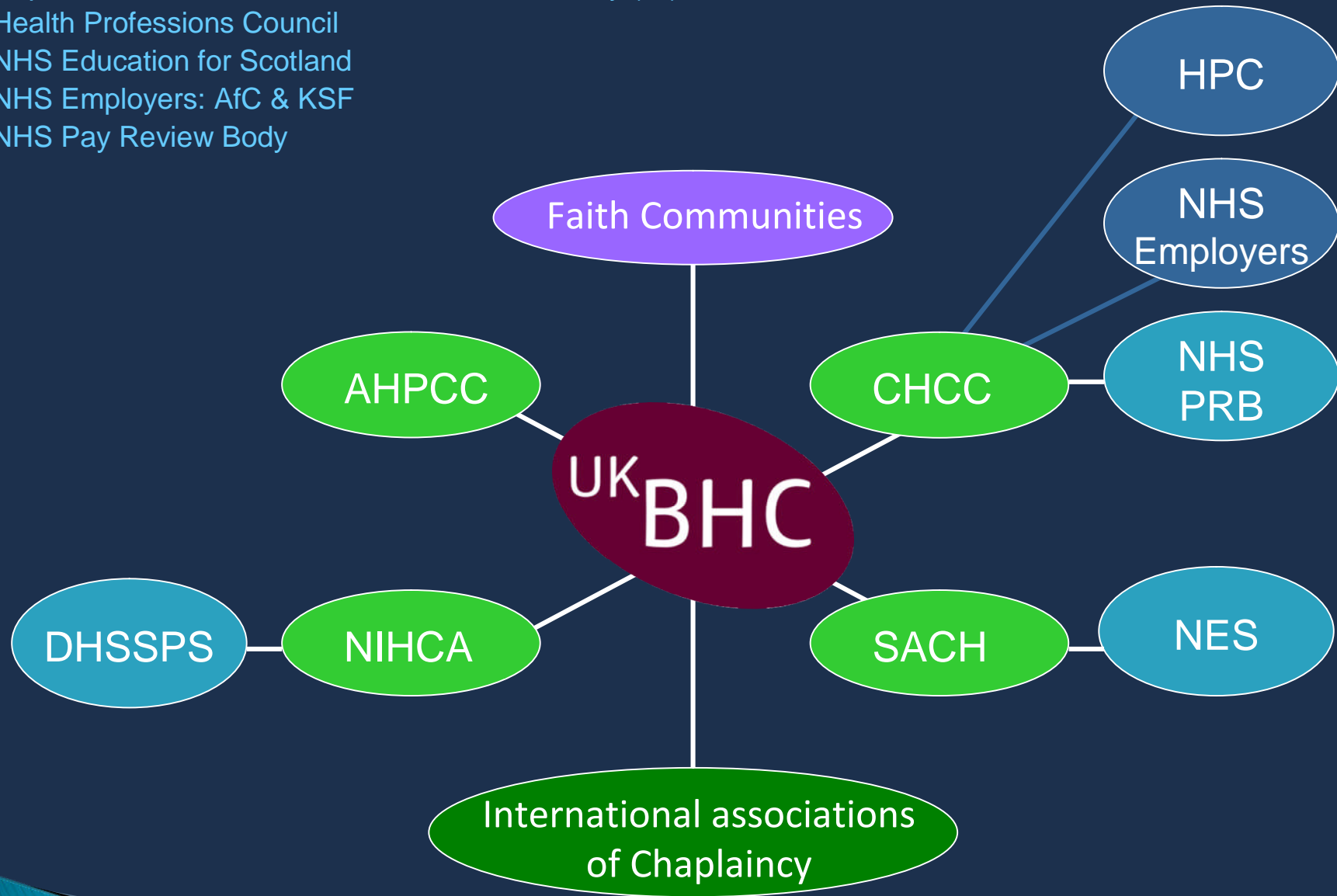
- promote, support and facilitate the work of the Professional Associations of Healthcare Chaplains for the benefit of patients and healthcare professionals.
- provide a collaborative forum to address the professional issues of chaplains
- reference group for the standards of chaplaincy practice
- a faculty of expertise to advance the body of specialised knowledge and skill of chaplaincy



## The UKBHC Register

- a register to demonstrate the accountability of healthcare chaplains to the public
- a mechanism to promote high standards of practice and behaviour
- a system to support professional regulation
- the difference between membership and registration

Dept of Health, Social Services and Public Safety (NI)  
Health Professions Council  
NHS Education for Scotland  
NHS Employers: AfC & KSF  
NHS Pay Review Body



## The role of the faith communities:

- general pastoral training
- training for ministers of religion about how to relate to healthcare organisations and support their members using them
- endorsement of religious role for chaplains
- engage with and respond to issues in healthcare related to religious beliefs and practices
- understand and promote the role of religious groups in healthy communities